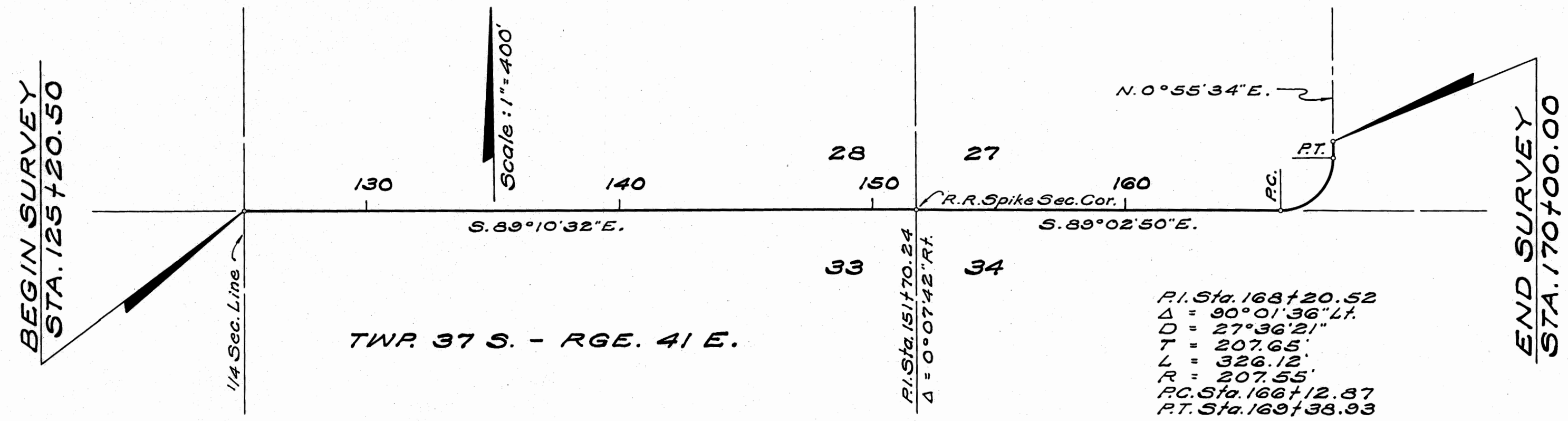


138676

FILED FOR RECORD
MARTIN COUNTY, FLA.
69 JUL - 9 PM 3:14
BY DOROTHY PIERCE
CLERK OF CIRCUIT COURT
DC



TWP. 37 S. - RGE. 41 E.

P.I. Sta. 168+20.52
 $\Delta = 90^{\circ}01'36''$ Lt.
 D = 27'36"21"
 T = 207.65'
 L = 326.12'
 R = 207.55'
 P.C. Sta. 166+12.87
 P.T. Sta. 169+38.93

We, John W. Cashin, as Executive Director of the State Road Department of the State of Florida, and Hilda M. Dalton, as Secretary of the State Road Department of the State of Florida, do hereby certify that this map is the Official Map of Location and Survey of a portion of Section 89030, designated as a part of State Road 707 in Martin County, Florida: Said portion of Section 89030 extending Easterly approximately 4479.50 feet to a point in the Southwest 1/4 of Section 27, Township 37 South, Range 41 East.

Prepared and adopted by the State Road Department of the State of Florida under provisions of Section 335.02, Florida Statutes of 1955.

John W. Cashin
Executive Director, State Road Department

Attest: *Hilda M. Dalton*
Secretary, State Road Department

Approved: *[Signature]*
Engineer of Rights of Way
Date: June 19, 1969

Filed for record in the Office of the Clerk of the Circuit Court for the County of Martin, State of Florida, in Map Book 4, Page 80, on the 9th day of July, A.D. 1969.

Dorothy Pierce
Clerk of the Circuit Court
Martin County, Florida